

# PERRINE ROUSSEAU

## PARIS

'There is a visible link between a painter's canvas and a weavers's weft.'



2019  
PRESS RELEASE

# TABLE OF CONTENTS

PERRINE ROUSSEAU / PRESENTATION	1
THE DESIGN / CREATION STUDIO	2
SPECIAL CREATIONS	3
FABRIC COLLECTION	5
RUG COLLECTION	6
PRODUCTION FACILITIES	7
OUR CLIENTS	8
PRESS	11



# PERRINE ROUSSEAU PRESENTATION



Studying at the Ecole Nationale Supérieure des Arts Décoratifs in Paris enabled Perrine Rousseau to develop her own vision for textiles and her traditional yet resolutely contemporary approach to weaving.

Established in 2006, Perrine Rousseau's brand and work illustrate her passion for artistic creativity, traditional craftsmanship, and nature. Her creations convey a personal viewpoint on the art of weaving.

The intuitiveness of our hands and the art of movement are the characteristics that Perrine Rousseau searches to express in her creations. Her work is delicate, sophisticated, dense and raw, and made with natural and noble materials.

Perrine Rousseau has created a brand emphasizing human, ethical and ecological values; a brand that embodies simple and eternal principles; a brand that respects and upholds the transition between Man and the Earth, between the source of an intrinsic movement and today's work of art.



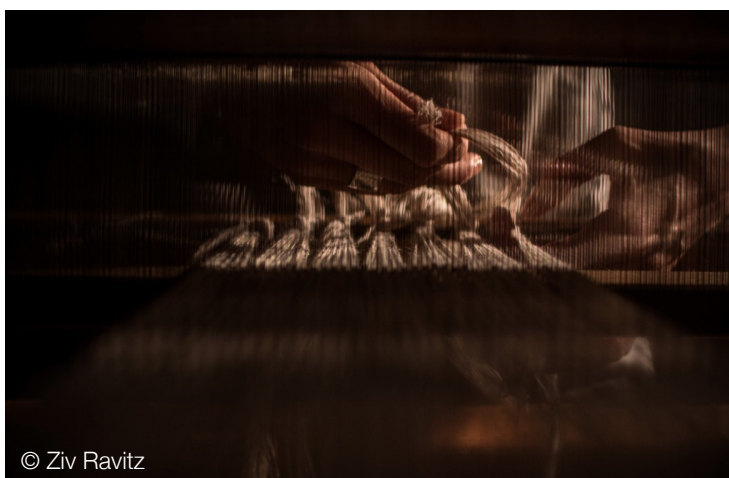
## THE DESIGN / CREATION STUDIO

### ‘JOINING AN INTRINSIC MOVEMENT AND WORK OF ART’

Perrine Rousseau set up her design studio in the 20th district in Paris.

On traditional pedal looms, Perrine Rousseau works and intersects the threads to create unique textile works of art founded on unexpected contrasts, audacious transparencies, rare colours, subtle plays on light...

Her work is meant to be seen, touched, and... heard. The sound of the looms, the whispers of the shuttles, the rustle of her fabrics lend a captivating and magical air to Perrine Rousseau's studio.



© Ziv Ravitz



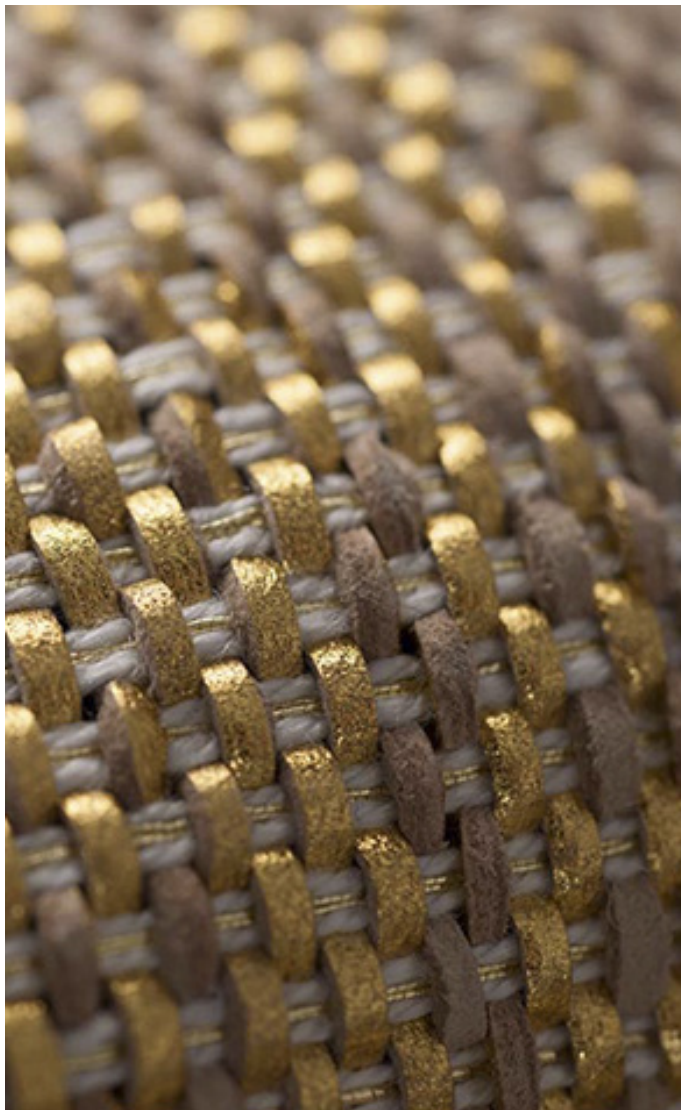
© Ziv Ravitz

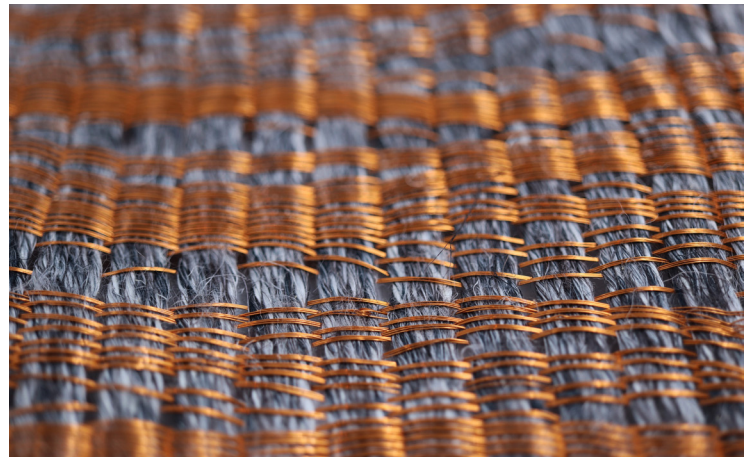


# SPECIAL CREATIONS

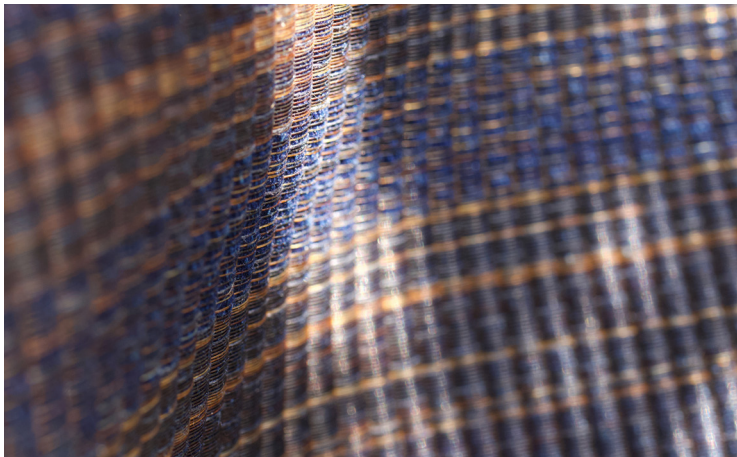
PERRINE ROUSSEAU CREATES AND DEVELOPS HER PROJECTS IN HER  
DESIGN STUDIO IN PARIS.

DELICATE, SOPHISTICATED, DENSE AND RAW DESIGNS, MADE WITH  
NATURAL AND NOBLE MATERIALS

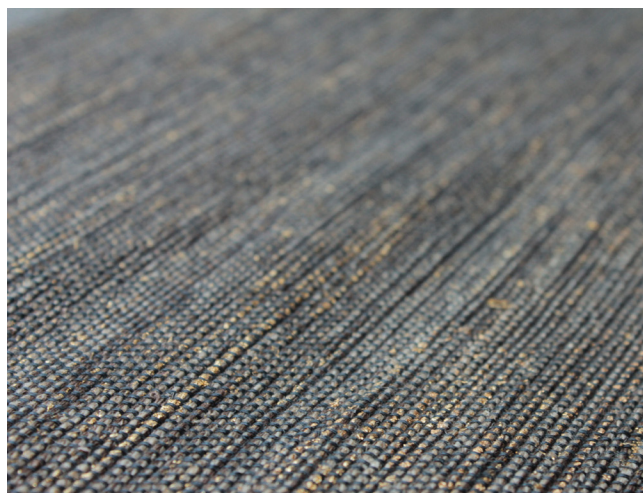
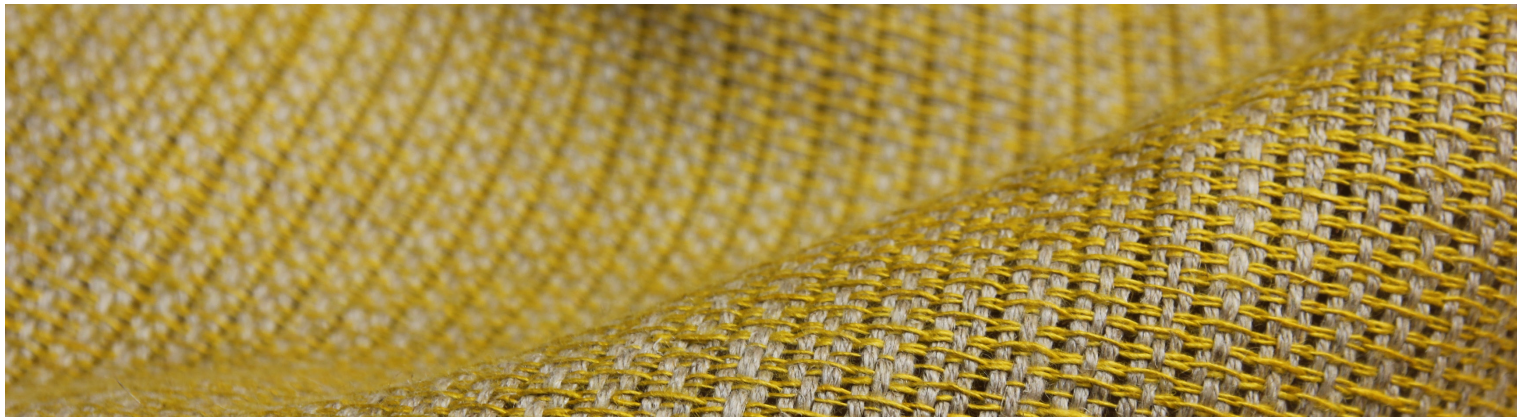




PLAY ON LIGHT AND TEXTURES



EACH CREATION IS UNIQUE AND ORIGINAL





# RUG COLLECTION

OUR RUGS ARE HANDWOVEN OR HAND-KNOTTED AND MADE TO ORDER, WITH NO SIZE LIMIT. THE COLOURS, DENSITIES AND PILE CAN BE TAILORED TO EACH PROJECT. EACH RUG IS UNIQUE AND AUTHENTIC.



OUR HAND-WOVEN WOOL RUG 'HALLAHA' FOR CLEMENTS DESIGN



FRENCH EMBASSY IN CHINA



# PRODUCTION FACILITIES

Perrine Rousseau has set up her production studios in India and Nepal. She works with the best textile artisans who have a traditional savoir-faire, and who deliver excellent work using ancient techniques to create contemporary fabrics and rugs.

Everyday, those artisan's hands create and admirable body of works, both bold and sensitive, based on irreplaceable expertise intrinsic to their craftsmanship.

Each creation is the result of a collaboration between Perrine Rousseau and the artisans. This mutual enrichment enables the brand to offer such exceptional collections.



# OUR CLIENTS

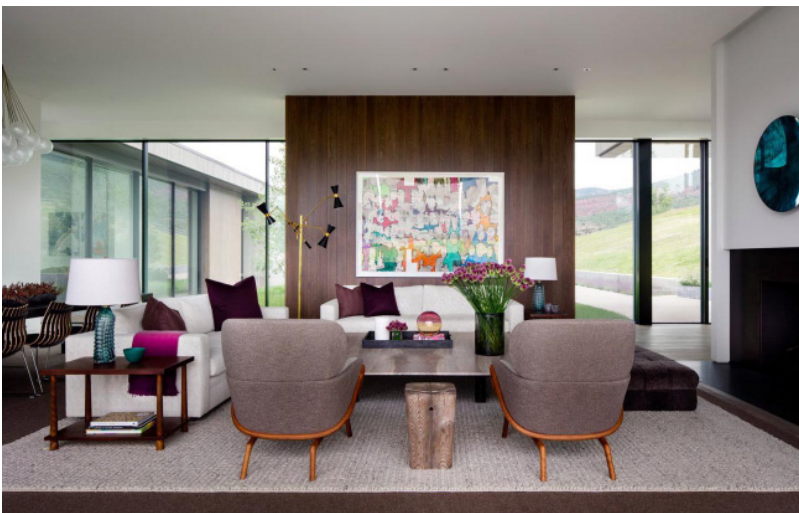
Architects and Decorators are Perrine Rousseau's privileged partners.

She creates bespoke orders with colors, sizes and materials specific to their projects and needs.

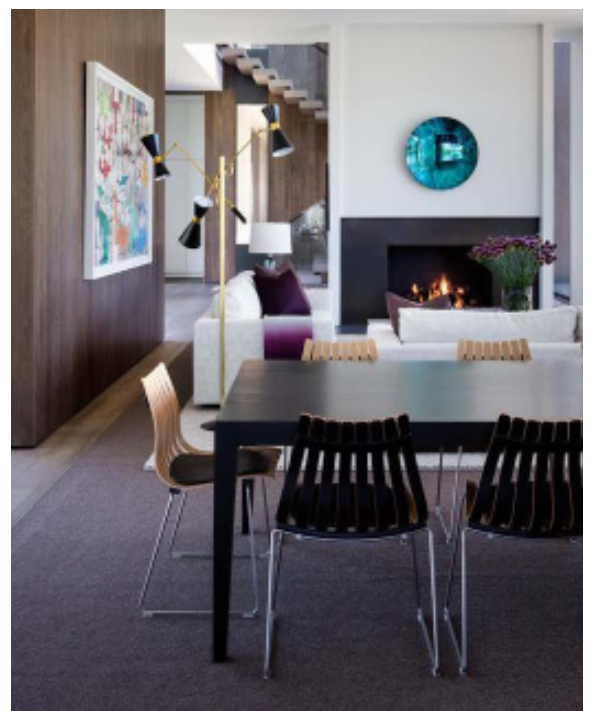
Luxury fashion houses regularly collaborate with Perrine Rousseau for their fashion collections and for the decoration of their luxury boutiques.



MONIQUE GIBSON CHOSE OUR TAILORED HAND-WOVEN RUG FOR A PRIVATE PROPERTY



SHAWN HENDERSON CHOSE OUR HAND-WOVEN WOOL RUG 'HALLAHA' FOR A PRIVATE PROPERTY IN ASPEN





ASSEMBLÉE NATIONALE FRANCE, SOFA UPHOLSTERED WITH OUR HAND-WOVEN FABRIC 'LUZ SAINT-JACQUES'  
ARCHITECT : PIERRE YOVANOVITCH



UNIQUE HAND-WOVEN CUSHION WITH LEATHER AND LINEN



OUR HAND-WOVEN LINEN AND WOOL RUG 'COUTURIER'



OUR HAND-WOVEN WOOL FABRICS 'PARO' AND 'NIMBE' IN A PRIVATE RESIDENCE IN FRANCE



PRESENTATION OF PERRINE ROUSSEAU'S COLLECTIONS TO ATELIER AM



CHAIR GILDED WITH GOLD LEAF WITH OUR HAND-WOVEN FABRIC 'LUNE GOLD' SIGNED BY JEAN MICHEL FRANK



SOFA UPHOLSTERED WITH OUR HAND-WOVEN LINEN FABRIC 'MANALA' FOR KERING'S OFFICES BY ARCHITECT PIERRE YOVANOVITCH



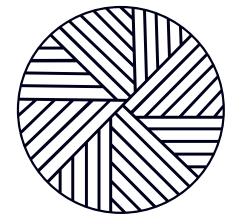
SOFA UPHOLSTERED WITH OUR WOOL AND MOHAIR FABRIC 'THABOR' BY WALDO WORKS AND CLEMENTS DESIGN, FOR A PRIVATE RESIDENCE



CUSTOM HAND-WOVEN FABRIC FOR BALenciAGA SHOES



REPORTAGE TV5 MONDE 2018



PRESS

VERANDA MAGAZINE 2019



**ДИЗАЙН ELLE DECORATION**

**Ferrine Rousseau**  
**Корпус ручного плетения**

Судя по Ferrine Rousseau, искусство в сфере декора — в Марс. Здесь, на традиционной марсельской улице Пьерри-Риссо, она учитывает аграрные корни. Ручное плетение, рельефные работы из натуральных материалов — льна, шерсти, хлопка, кожи — в ее творчестве находят свое место. Плоские декоративные панели, подвесные светильники, настенные часы — это ее стиль. Ferrine Rousseau сотрудничает с именитыми дизайнерами и архитекторами, такими как Лорд Работински, Шарль-Александр, Роберт Курдюк, Оливье Сутин, дизайнерская фирма Masha Masha, Atelier AAA, Clemente Design, Studio Roid и другие. А личные творческие эксперименты — Chanel, Louis Vuitton, Bottega Veneta, Hermes, Celine, Looney — являются ее вдохновением.

**Lison de Caunes**  
**Мозаики из соломки**

Лизон де Коунес начала карьеру в 1970-х годах в качестве декоратора. Ее стиль — это сочетание традиционных ремесленных техник с современными материалами. Она работает с соломкой, керамикой, металлом и деревом. Ее работы можно увидеть в музеях и частных коллекциях по всему миру. Она сотрудничает с такими брендами, как Hermès, Louis Vuitton, Chanel и другими.

ELLE DECO RUSSIA 2018



CALIFORNIA STYLE 2018

# DESIGN

EDITED BY ANDREA STANFORD

## Second Impression

### LOS ANGELES' BELOVED GARDE SHOP BRINGS ITS WORLDLY PERSPECTIVE TO SUMMERLAND

Garde, the Beverly Hills-based interior design studio, is opening the city with a new second location outside of its home base in Summerland, set in a historic 1931 Shaker-style barn. Despite the size of the original site, the shop is filled with the brand's warm, minimalist aesthetic, including exclusive lighting and Ben Stinson furniture.

As well as new collaborations such as a line of fixtures and hardware created by founder Scott Stiles and illustrator Peter van Cuijck, there's also a new collection of one-bedroom rental on the second floor available to book through Garde's website with house tours including detailed oak counters by Studio BAR and ceramics with a CB&J coffee bar logo.

The renovation of each space occurred during the pandemic and was a difficult task. Through their team's vision, the design team did more than "redo" the space with the same "old" style. "We're interested in the past of the architecture of the community," says Stiles. "We're not interested in the past of the community." 805-462-0384; garde.com

# DESIGN

## Pattern Behavior

Five years after co-founding the California furnishings label Sereno & Lyle, Sereno Design is continuing to break creative ground. The studio designed and pattern recently debuted the Sereno Design Studio and its waterfront San Diego headquarters. Sereno Design is up-origami and contemporary fine art and decorative work, and incorporates them into custom tables, wallpapers, hand-bound books, ceramic tiles and more. The also uses her own eye to create abstract designs for interiors, all with a focus on her clients' needs. "Good design should have soul," says Sereno. "When you combine the elements of art, pattern and design in a way that's personal and unique, that's when the magic happens." 619-450-8800; sereno.com

## Reflective Thinking

A decorated interior discovered on the sidewalk by architecture designer James Kaufman is a design gem. Located in the heart of Los Angeles, the shop is a perfect store of all the individual items people have brought with them. 323-461-8110; sereno.com

## Return Address

It's a homecoming for Anaheim T&B-Garden and her world of design. After 20 years in New York City, the author is returning to her hometown of Anaheim to launch her new lighting design studio. T&B-Garden is a Los Angeles-based lighting design studio. She is currently working on a new collection of lighting fixtures and is excited to be back in her hometown. 949-441-1111; tnb.com

# Matières à l'inspiration

Les ateliers artisanaux sont de plus en plus nombreux à ouvrir leurs portes. Ils offrent un cadre idéal pour découvrir les savoir-faire traditionnels et les techniques modernes. Les artisans travaillent avec passion et créativité, offrant des produits uniques et personnalisés.

**Le savoir-faire artisanal est un trésor à préserver.**

72 *La Passion*

72 *La Passion*

72 *La Passion*

# 72 La Passion

72 *La Passion*

72 *La Passion*

72 *La Passion*

# PRESS

72 *La Passion*

72 *La Passion*

LE PARISIEN 2018

# ARCHITECTURAL DIGEST

## LES PLUS BELLES MAISONS DU MONDE

# AD

## SPÉCIAL ITALIE

INSPIRATION NOS MAISONS PRÉFÉRÉES À ROME, VENISE, ISCHIA...

GAE AULENTI L'ARCHITECTE SUDORJEU

FARNIENTE MODE D'EMPLOI FAUTEUILS, HAMACS, CHAISES LONGUES

GUIDE CUISINE LES TENDANCES DU MOMENT

# De si beaux savoir-faire

Entre créativité et technicité, les métiers de la décoration mettent tout en œuvre pour donner vie à des univers toujours plus riches et beaux. L'exposition AD Matières d'Art, au Palais d'Iéna, permet de découvrir le travail des meilleurs artisans.

1. LE FEU DÉCOUVRE FORMES... 2. PANSERIE... 3. LA SALLE D'EXPOSITION... 4. CHIFFONNIER MODERNE...

# L'UNIVERS AD L'événement

## Le programme des conférences

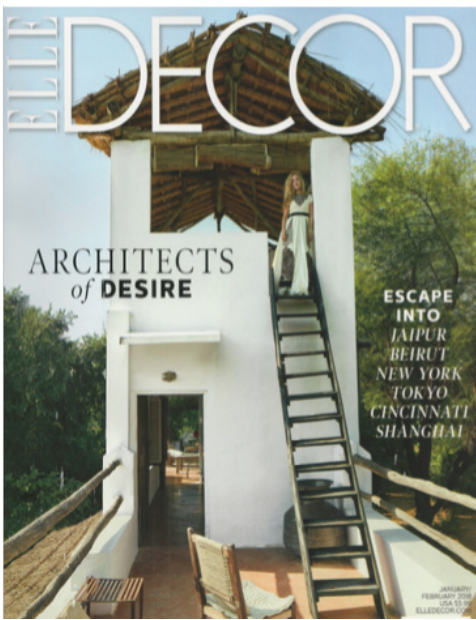
Pour accompagner la mise de l'exposition, des rencontres sont organisées en collaboration avec le Ministère National. Elles sont animées par Marie Reynard, sous-directrice pour le développement culturel et scientifique.

21 mars, de 18h30 à 19h30: Décor mural: l'art des surfaces avec Tristan Auer, décorateur, Caroline Perini, créatrice de AC Matière et du tour de France Matériaux d'Exposition aux Editions Via, et Emmanuel Maslin-Gilman, professeur à l'Université de Caen.

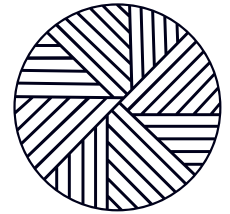
22 mars, de 18h30 à 19h30: La décoration contemporaine au féminin avec Marie Reynard, sous-directrice pour le développement culturel et scientifique, et Lucie Morand, responsable développement de Fort Royal, et Jean-Yves Richard, professeur à l'École Boule.

23 mars, de 18h30 à 19h30: Le Palais d'Iéna: 80 ans de architecture et de créations avec Joseph Abram, professeur à l'École nationale supérieure d'Architecture de Nancy, et Jérôme Carmona, professeur à l'Université Paris-Sorbonne, et Lucie Morand, responsable développement de Fort Royal, et Jean-Yves Richard, professeur à l'École Boule.

24 mars, de 18h30 à 19h30: Le Palais d'Iéna: 80 ans de architecture et de créations avec Joseph Abram, professeur à l'École nationale supérieure d'Architecture de Nancy, et Jérôme Carmona, professeur à l'Université Paris-Sorbonne, et Lucie Morand, responsable développement de Fort Royal, et Jean-Yves Richard, professeur à l'École Boule.



ELLE DECO USA 2018



PRESS



MARIE CLAIRE MAISON



VERANDA 2018



# CONTACTS

## STUDIO SHOWROOM PARIS

PERRINE ROUSSEAU PARIS

118 rue des Couronnes  
75020 Paris

(T) 00 33 1 42 23 16 42

[contact@perrinerousseau.com](mailto:contact@perrinerousseau.com)

## FRANCE AND SWITZERLAND REPRESENTATION

BEPA HOME

24, rue de d'Aumale  
75009 Paris

(T) 00 33 (0) 6 19 92 48 76

[bepa2011@hotmail.fr](mailto:bepa2011@hotmail.fr)  
[www.bepa-home.fr](http://www.bepa-home.fr)

## UK REPRESENTATION

MIOMONDO

marian frezza-arnold

(T) 44 (0)7 840 105 268

[marian@miomondo.co.uk](mailto:marian@miomondo.co.uk)  
[www.miomondo.co.uk](http://www.miomondo.co.uk)

## USA REPRESENTATION

ALT FOR LIVING

148 West 28th Street  
New York, NY 1001

ALT BOX 60

234 East 60 Street  
New York, NY 10065

ALT FOR LIVING LA

808 N La Cienega Blvd  
West Hollywood, CA 90069

(T) 00 1 212 431 1000

[info@altforliving.com](mailto:info@altforliving.com)  
[www.altforliving.com](http://www.altforliving.com)

## CANADA REPRESENTATION

MEMO SHOWROOM

585 Dupont St, 2nd Floor  
Toronto, ON  
M6G 1Y8

(T) 00 1 647 350 3700

[hello@memoshowroom.com](mailto:hello@memoshowroom.com)  
[www.memoshowroom.com](http://www.memoshowroom.com)

## SINGAPOUR REPRESENTATION

VANTAGE CONCEPT PTE LTD

#03-10 Innovation Place  
31 Mandai Estate  
Singapore 729933

(T) 00 65 68 34 33 80

[concept@vantage8.com.sg](mailto:concept@vantage8.com.sg)  
[www.vantageconcept.com](http://www.vantageconcept.com)

